



ColourFence - "It Just Makes Sense"

Maintenance Free Forever

Guaranteed For A
Minimum Of 25 Years

Withstands Gusts
Up To 130mph

100% Recyclable

Professional
Installation Available

Fire Proof

Affordable Quality

National Coverage

"It Just Makes Sense"



ColourFence

WELCOME TO COLOURFENCE

Trade Presentation Pack

See what our
customers say:



Rated Excellent

Our Ranges:

ColourFence

ColourRail

ColourGate

ColourShed



ColourRail

For More Info:
www.colourfence.co.uk

For A Presentation - Contact Us Today
E: sales@colourfence.co.uk T: 0800 644 4117



ColourFence - "It Just Makes Sense"

Maintenance Free Forever

Trade Presentation Pack Contains

**Guaranteed For A
Minimum Of 25 Years**

**Withstands Gusts
Up To 130mph**

100% Recyclable

**Professional
Installation Available**

Fire Proof

**Affordable Quality
National Coverage**

"It Just Makes Sense"

**See what our
customers say:**



Our Ranges:

ColourFence

ColourRail

ColourGate

ColourShed



For More Info:
www.colourfence.co.uk

About Climar

Climar are the manufacturers of ColourFence based in Newport, South Wales. We have been trading for around 21 years and have nationwide coverage across the UK. Due to unprecedented demand we are now looking for additional trade or approved installer partners.

In Your Presentation Pack, you should receive the following:

Trade Partners Promotional Handout

Approved Installer Promotional Handout

ColourFence Brochure

ColourRail Brochure

ColourFence Trade Price List

ColourRail Trade Price List

Example Images Of Our Range

Display Stands

Samples and POS

Contact List

You can also request additional material:

Full size display stands installed at your premises

Samples, POS and trade price lists

Access to our trade/e-commerce website for ease of ordering

Marketing material – Easy access to our range of images and product descriptions for use on your own website/social media

Product knowledge training/technical support provided if required

Local leads/opportunities sent directly to you

In-house quoting service, supplied with 2D and 3D prints of your quote



ColourFence - "It Just Makes Sense"

Maintenance Free Forever

Guaranteed For A
Minimum Of 25 Years

Withstands Gusts
Up To 130mph

100% Recyclable

Professional
Installation Available

Fire Proof

Affordable Quality

Nationwide Coverage

"It Just Makes Sense"

See what our
customers say:



Our Ranges:

ColourFence
ColourRail
ColourGate
ColourShed



For More Info:

www.colourfence.co.uk

TRADE PARTNERS URGENTLY REQUIRED

Due to unprecedented demand we are now looking to introduce the Colourfence range of products including ColourFence, ColourRail and ColourGates to selected trade partners in dedicated areas across the UK.

BENEFITS TO YOU

- **No financial risk and no stocking required**
- **Full direct dropship delivery to you or your customers**
- Special trade discount terms available
- Full size display stands installed at your premises if required
- Samples, POS and trade price lists
- Access to our trade/ecommerce website for ease of ordering
- Marketing material – Easy access to our range of images and product descriptions for use on your own website/social media
- Product knowledge training/technical support provided if required



Full product presentation by one of our commercial team at your premises if required.

Get ready for Landscaping season, become a partner today.

We are limiting the number of Trade partners in each area, if you are interested please contact us **URGENTLY** for more information.

For Brochures: www.colourfence.co.uk/request-brochure

For more information:

Tel: 0800 644 4117, E: sales@colourfence.co.uk, visit www.colourfence.co.uk



ColourFence - "It Just Makes Sense"

Maintenance Free Forever

Guaranteed For A
Minimum Of 25 Years

Withstands Gusts
Up To 130mph

100% Recyclable

Professional
Installation Available

Fire Proof

Affordable Quality

Nationwide Coverage

"It Just Makes Sense"

See what our
customers say:



Our Ranges:

ColourFence
ColourRail
ColourGate
ColourShed



For More Info:
www.colourfence.co.uk

APPROVED INSTALLERS URGENTLY REQUIRED

Due to unprecedented demand we are now looking to introduce the Colourfence range of products including ColourFence, ColourRail and ColourGates to selected approved installers in dedicated areas across the UK.

BENEFITS TO YOU

- **No financial risk and no stocking required**
- **Full direct dropship delivery to you or your customers**
- Special trade discount terms available
- Local leads/opportunities sent directly to you
- In-house quoting service, supplied with 2d and 3d prints of your quote
- Full size samples, POS and trade price lists available
- Access to our trade/ecommerce website for ease of ordering
- Marketing material – Easy access to our range of images and product descriptions for use on your own website/social media
- Product knowledge and installation training/technical support provided if required



Full product presentation by one of our commercial team at your premises if required.

Get ready for Landscaping season, become a partner today.

We are limiting the number of approved installers in each area, if you are interested please contact us **URGENTLY** for more information.

Full range of products and colours available on www.colourfence.co.uk

For Brochures: www.colourfence.co.uk/request-brochure

For more information:

Tel: 0800 644 4117, E: sales@colourfence.co.uk, visit www.colourfence.co.uk



ColourFence - "It Just Makes Sense"

Maintenance Free Forever

Example Images From Our Portfolio

Guaranteed For A
Minimum Of 25 Years

Withstands Gusts
Up To 130mph

100% Recyclable

Professional
Installation Available

Fire Proof

Affordable Quality

National Coverage

"It Just Makes Sense"

See what our
customers say:



Our Ranges:

ColourFence

ColourRail

ColourGate

ColourShed



ColourFence



ColourGate



Estate Rail



ColourRail

Take advantage of our easy access to our range of images and product descriptions for use on your own website/social media by contacting sales@colourfence.co.uk

For More Info:
www.colourfence.co.uk



ColourFence - "It Just Makes Sense"

Maintenance Free Forever

Display Stands

Guaranteed For A
Minimum Of 25 Years

Withstands Gusts
Up To 130mph

100% Recyclable

Professional
Installation Available

Fire Proof

Affordable Quality

National Coverage

"It Just Makes Sense"

See what our
customers say:



Our Ranges:

ColourFence

ColourRail

ColourGate

ColourShed

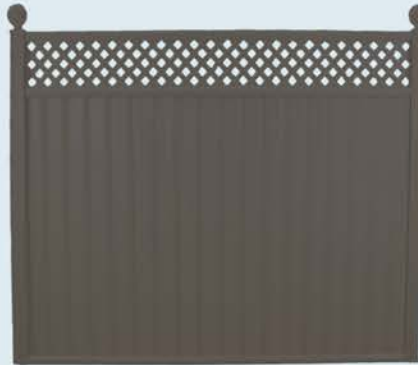


For More Info:
www.colourfence.co.uk

Display stands available where suitable prominent display areas are granted. Supply and installation of display stands by ColourFence.

ColourFence Display Stands

Two panels required to be displayed, one of each below



ColourFence Trellis Panel
Available in: Grey
DIMENSIONS: 2.35m w x 1.8m h

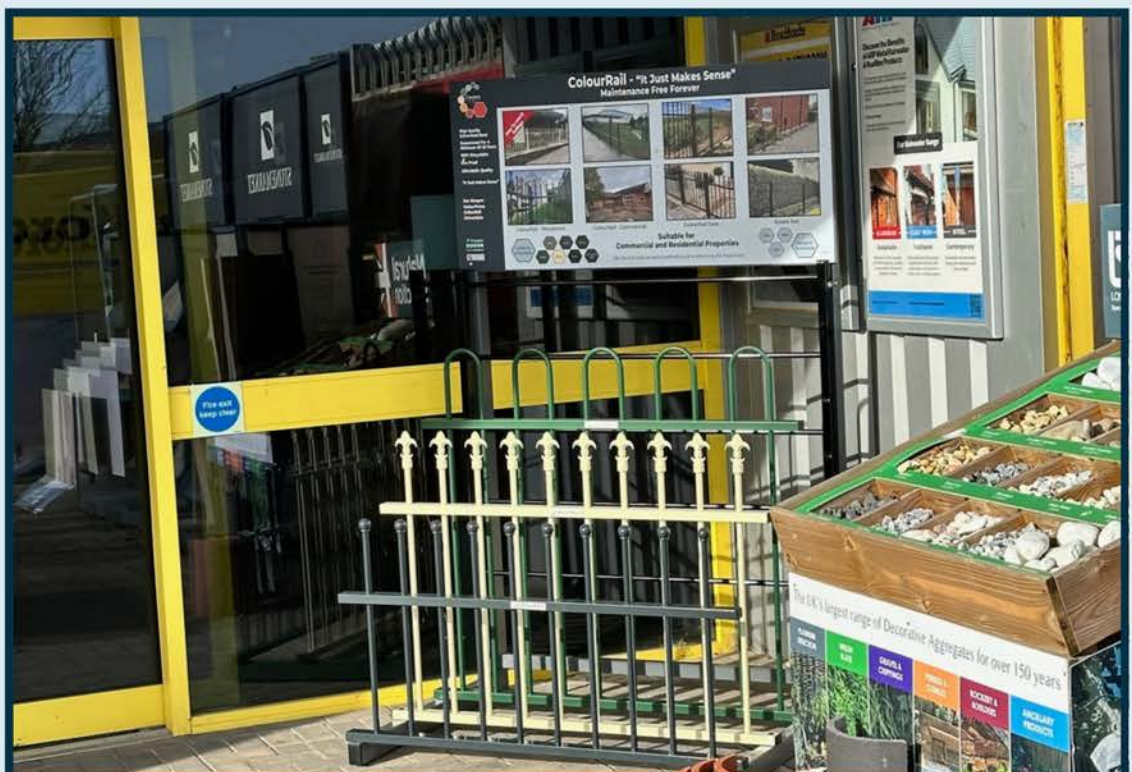


ColourFence Plain Panel with No Trellis
Available in: Brown, Green, Cream and Blue
DIMENSIONS: 2.35m w x 1.5m h

ColourRail Display Stands

Standard footprint dimensions: 1.12m w x 1.5m h x 0.8m d

Other display stand sizes available to suit



ColourRail and Estate Rail Display Stand

Available in: Blue, Green, Cream, Brown, Grey, Anthracite Grey, Black
DIMENSIONS: 1.12m w x 1.5m h x 0.8m d



ColourFence - "It Just Makes Sense"

Maintenance Free Forever

Samples and POS

Guaranteed For A
Minimum Of 25 Years

Withstands Gusts
Up To 130mph

100% Recyclable

Professional
Installation Available

Fire Proof

Affordable Quality

National Coverage

"It Just Makes Sense"

These samples are vital to show customers the quality, finish and strength of our products. They have proven successful in boosting sales.

ColourFence Samples



Grey ColourFence Sample
Our Bestselling Contemporary Grey
DIMENSIONS: 70cm w x 42.5cm h



ColourFence Sample
Available in: Brown, Green, Cream & Blue
DIMENSIONS: 70cm w x 42.5cm h

ColourRail Samples

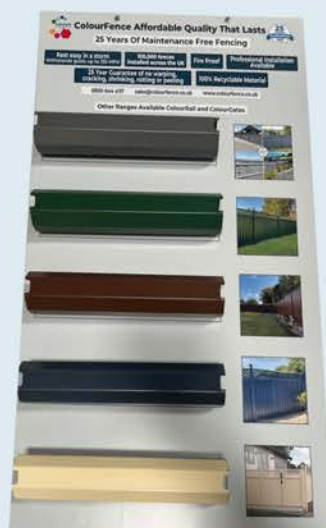


Estate Rail Sample
Available in: Black & Anthracite Grey
DIMENSIONS: 50cm w x 46cm h



ColourRail Triple Design Sample
Available in: Black & Anthracite Grey
DIMENSIONS: 52cm w x 56cm h

Sample Board



ColourFence Sample Board
Comes with handle for ease of carrying.
DIMENSIONS: 48.5cm w x 88cm h

Brochure Dispensers Available Upon
Request

To order POS and Samples:

Please contact the
Commercial Department at
sales@colourfence.co.uk.

A member of the team will be in touch
with you within 48 hours.

See what our
customers say:



Rated Excellent

Our Ranges:

ColourFence

ColourRail

ColourGate

ColourShed



For More Info:
www.colourfence.co.uk



ColourFence - "It Just Makes Sense"

Maintenance Free Forever

Contact Details

Guaranteed For A
Minimum Of 25 Years

Withstands Gusts
Up To 130mph

100% Recyclable

Professional
Installation Available

Fire Proof

Affordable Quality
National Coverage

"It Just Makes Sense"

See what our
customers say:



Rated Excellent

Our Ranges:

ColourFence

ColourRail

ColourGate

ColourShed



For More Info:
www.colourfence.co.uk

Commercial Department

Email: sales@colourfence.co.uk

Telephone: 0800 644 4117

Admin Department

Bo Stewart-Woods

Email: bo.stewart-woods@climar.co.uk

Telephone: 0800 644 4117

Technical Department

David Bowen

Email: david.bowen@climar.co.uk

Telephone: 07592 501 754

Finance Department

Email: accounts@colourfence.co.uk

Telephone: 0800 644 4117

Customer Service

Email: info@colourfence.co.uk

Telephone: 0800 644 4117